

BATON SOS

User Manual



BATON

www.batonsos.com

BATON SOS is ?

* To protect the occupants (drivers) of the vehicle in the event of a traffic accident, Automatic recognition will allow the buzzer to sound and report a ' Barton SOS '.Automatically send location and text for, emergency call (119)requests and text transmission (MMS) This is an SOS response service.

In the event of minor contact or vehicle failure, a simple ' button press is used. Automatically connected ' insurance agency handling service ' with my location notification Device with functionality that enables requests.

Product components

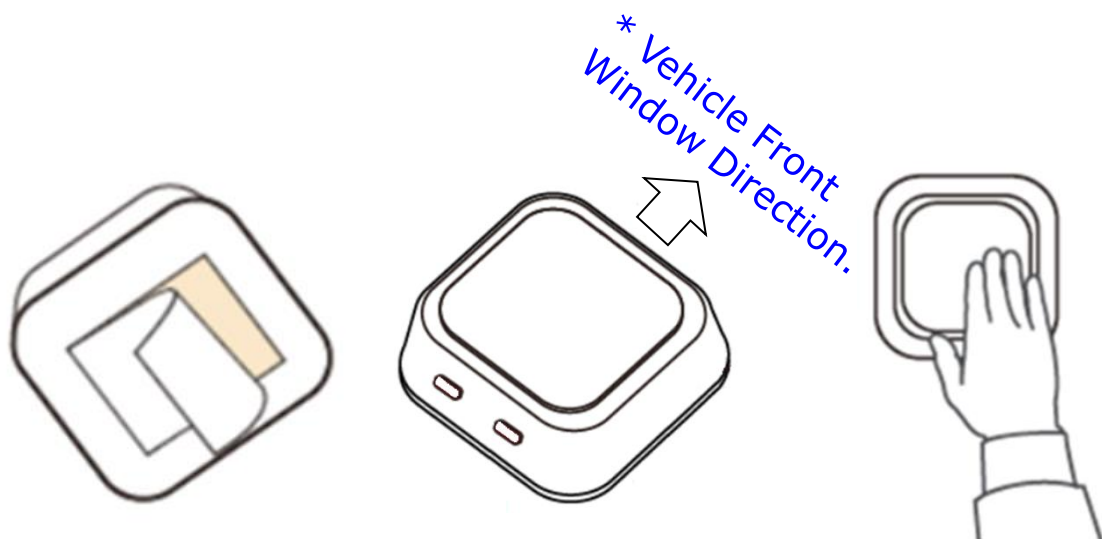


BATON(S-1)

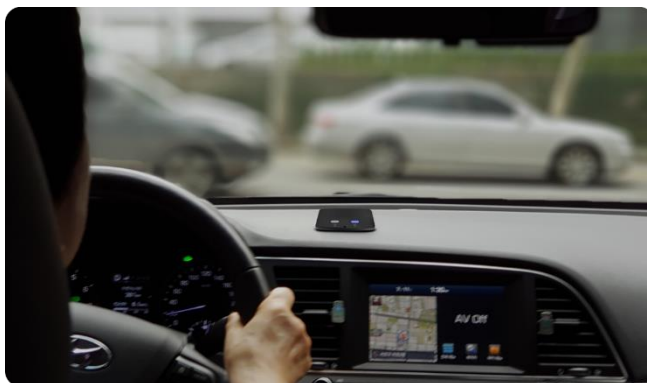


Quick Guide

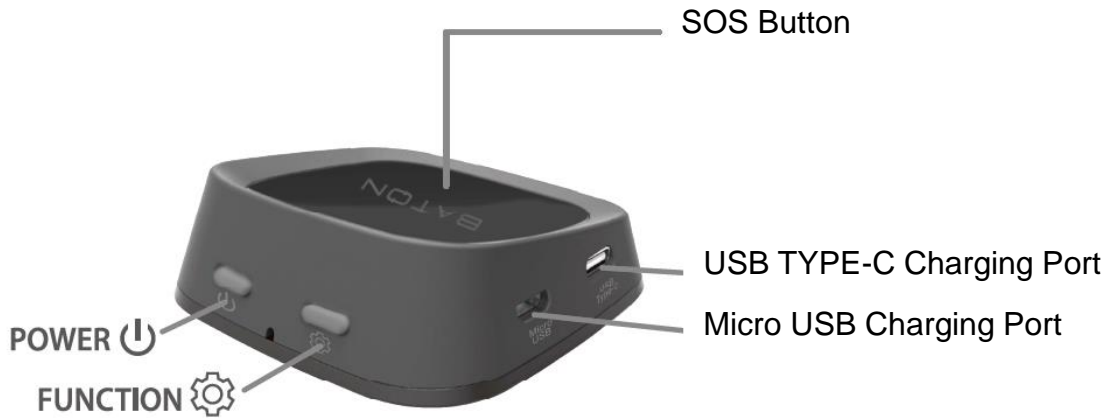
How to Install Device ?





Once the protective vinyl has been removed from the underside gel pad of the product, use Other positions can be selected by the driver. Please install it horizontally.



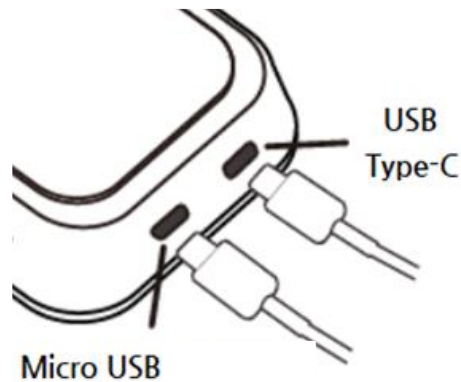
Product Description



※ Detail Information

Button/LED	Function & Operating
Power ()	<ul style="list-style-type: none"> - Press and hold the button for more than 3 seconds to turn on/off. * BLUE lighting and Beep Sound at Power On * Beep sound : Power On Beep (1time), Power Off Beep, (2 time)
Function ()	<ul style="list-style-type: none"> - This button is an administrator button.(User not available)
SOS Button (Manual Mode)	<ul style="list-style-type: none"> - when short press the button on 3 times. Calling the emergency center. - Press and hold the button for over 3 seconds calling insurance company. - In the event of an SOS, press the button once to SOS cancel.
Micro, Type-C USB Charger Port	<ul style="list-style-type: none"> - Charging Port (Available each other type)
Red LED	<ul style="list-style-type: none"> - In the event of an SOS : Fast flash for 15 seconds - LOW Battery condition : Slow flash
※ Notice	<p>Automatic reporting does not work for approximately 10 seconds after device (S1) power-on.</p> <p>After turning on the power, calibrate the current mounting position for approximately 10 seconds. The automatic reporting function starts working after about 10 seconds after turning on the power.</p>

How to Charging



Charge the product using Micro USB or USB Type C Port.
(Charging Voltage : 5V/1A)

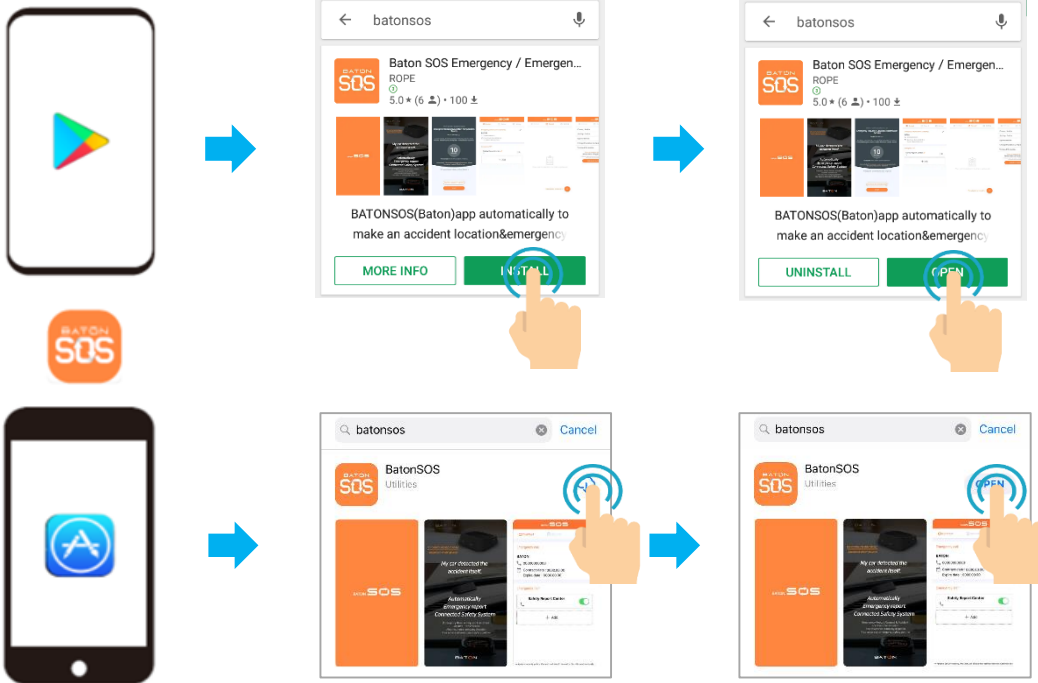
- Charging Time : It take about 90 ~ 120min
 - * The charging time may vary depending on the charging environment.
- Charging : Red LED Light - Complete : Red LED Off

Specifications

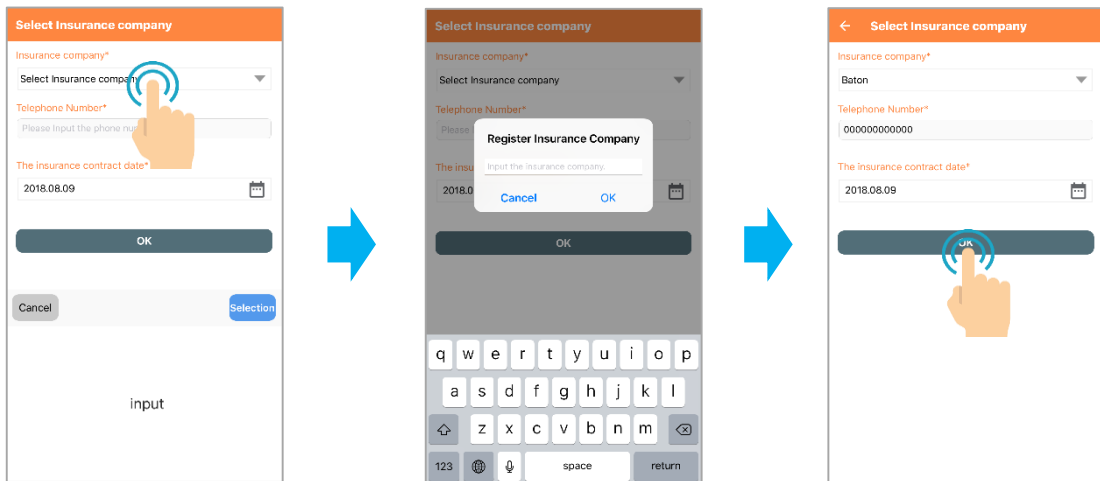
Communication	Bluetooth Low energy 2.4Ghz RF
Button	3 Button (Power, Function, SOS)
LED	2 LED (Red /Blue)
Battery	3.7V Li – Polymer Battery /500mA
Charge Volt	5V/1A (Micro USB, USB Type-C)
Operating Temp.	10 ~ 45°C
Storage Temp.	-5 ~ 55°C
Size	72(W) X 72(D) X 25(H)mm
Weight	180g

How to use APP

1. Please download and install the " Baton SOS " App from Google Paly Store on Android and the APP Store on iOS.



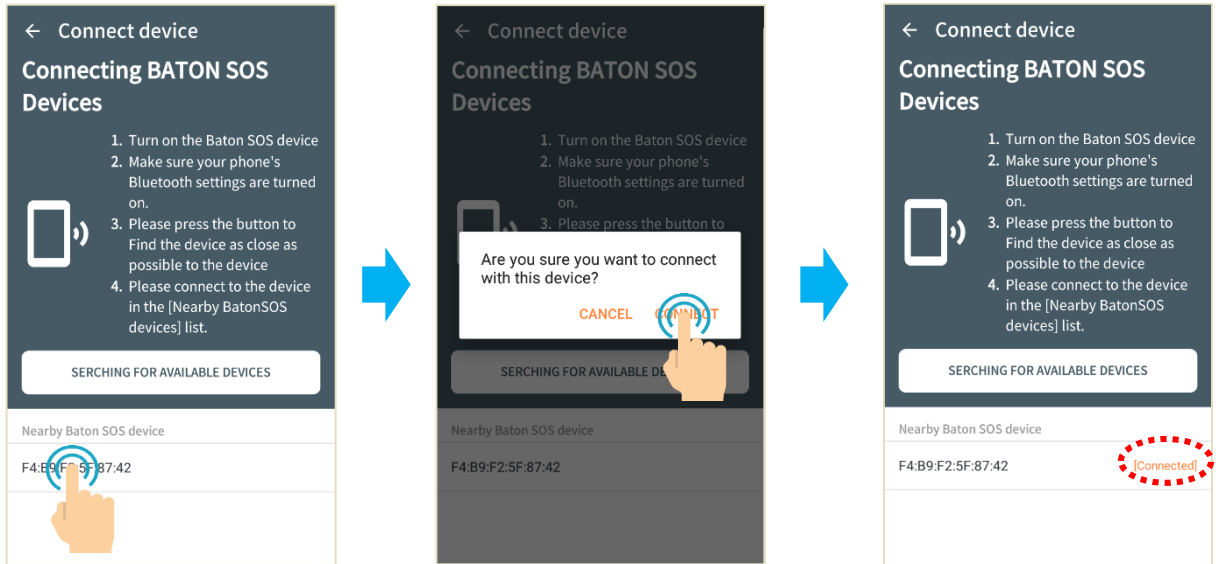
3. After running the app, input the phone number of the insurance company and insurance company name and select the date of insurance contract.



How to use APP

4. Connect the device.

* It must be connect the device after power on



5. When Baton device connection is complete, can be use the Baton SOS app.

* Please refer to www.Batonsos.com for details on how to use the app.

* Baton SOS App updates without notice for enhanced functionality. Recommend using new updated versions.

- Notice

📞 Do not exit APP while in use. Function doesn't work.

if have turned on phone again please have to run the Baton app.

📞 In the iOS version, the policy of Apple prohibits automatic texting and phone calls.

📞 Android version limits some features per country.

Warranty

Model	BATON SOS / S-1
Warranty Period	BATON : 1year Battery : 6 month
Purchase date	Y M D
Place of purchase	



- Address
#604 Seoul startuphub 21, Baek beom-ro 31-gil, Mapo-gu,
Seoul, Republic of Korea
 - Telephone : +8218114972
- * This manual is subject to change without notice to improve product performance.
- * The images in the manual may differ from the actual images and are subject to change without notice.